

CANADIAN COUNTY, OKLAHOMA

PLAN OF PROPOSED BRIDGE REPLACEMENT

BRIDGE "A" AIRPORT ROAD (NS-290) OVER UNNAMED CREEK

STRUCTURE NO. 0929000290004

BRIDGE "B" 260TH ROAD (EW-091) OVER UNNAMED CREEK

STRUCTURE NO. 0929010290003

- BOOK OF SHEETS**
- 01 TITLE SHEET
 - 02 SUMMARY OF NEW QUANTITIES AND NOTES
 - 03 BRIDGE "A" SOUTH ABUTMENT PLAN
 - 04 BRIDGE "A" SOUTH ABUTMENT DETAILS
 - 05 BRIDGE "A" NORTH ABUTMENT PLAN
 - 06 BRIDGE "A" NORTH ABUTMENT DETAILS
 - 07 BRIDGE "A" PIER AND SPAN DETAILS
 - 08 BRIDGE "A" DECK SUPERSTRUCTURE PLAN
 - 09 BRIDGE "A" DECK SUPERSTRUCTURE DETAILS
 - 10 BRIDGE "A" ABUTMENT DETAILS
 - 11 BRIDGE "A" SUPERSTRUCTURE DETAILS
 - 12

CHECK FOR APPROVED AND FILED

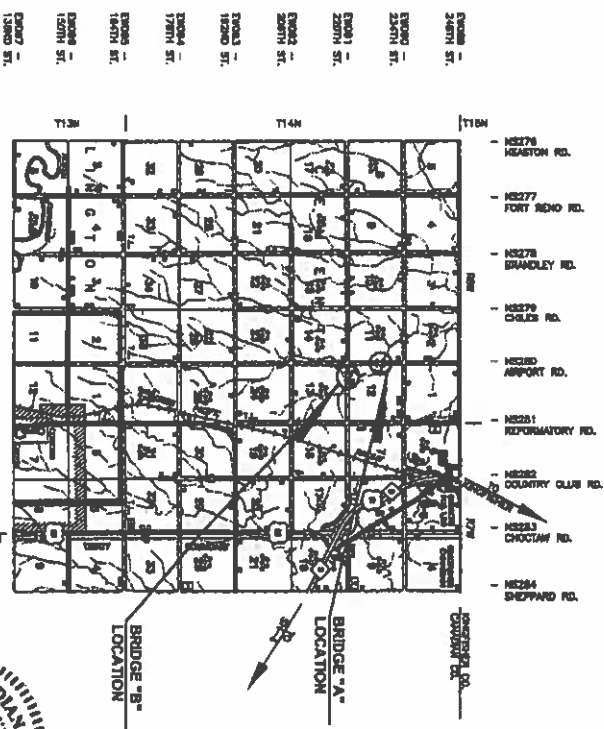
FILED
FILED
FILED
FILED
FILED

STATE OF OKLAHOMA
CANADIAN COUNTY
FILED OR RECORDED

AUG 09 2021

SHERY MURRAY
COUNTY CLERK

210568



BRIDGE "A" LENGTH 50.75 FT
BRIDGE "B" LENGTH 45.00 FT



APPROVED
BOARD OF COUNTY COMMISSIONERS

W. Allen Clark
COMMISSIONER

Daniel Anderson
COMMISSIONER

David Brown
COMMISSIONER

Sherry Murray 8-9-2021
COUNTY CLERK

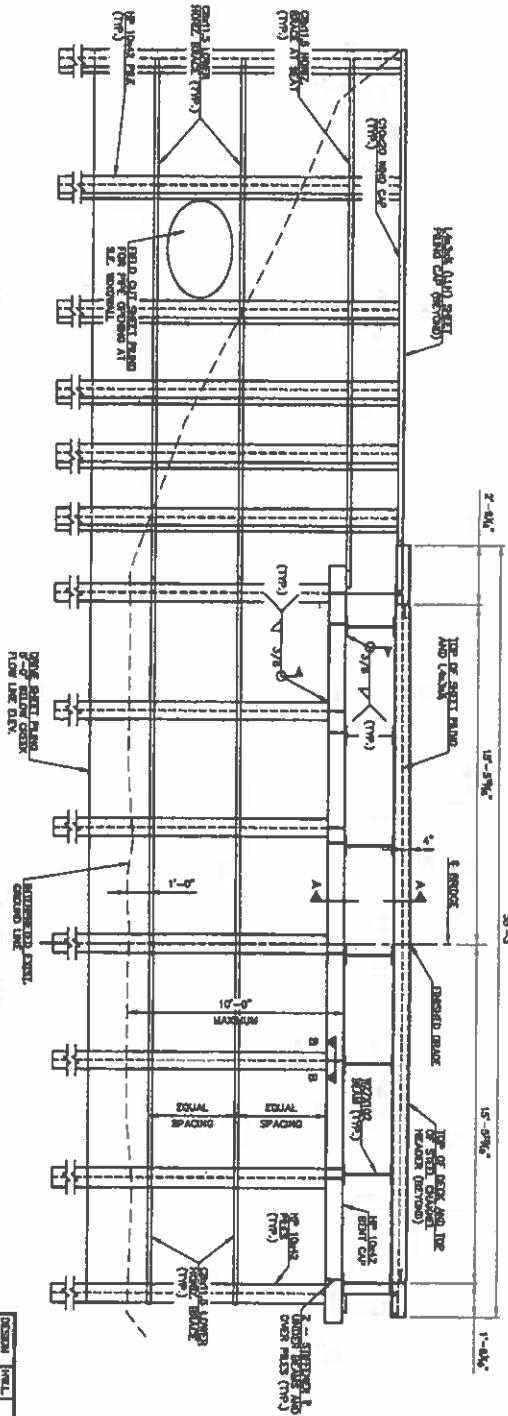
DATE

MKEC
Merrill-Kelcey Engineering Company
1000 N. W. 10th St.
Oklahoma City, Oklahoma 73102
7-8-2021

THIS PLAN AND SPECIFICATIONS FOR BRIDGE CONSTRUCTION, INCLUDING THE LOCATION OF THE BRIDGE, ARE THE PROPERTY OF THE ENGINEER. NO PART OF THIS PLAN OR SPECIFICATIONS SHALL BE REPRODUCED OR TRANSMITTED IN ANY FORM OR BY ANY MEANS, ELECTRONIC OR MECHANICAL, INCLUDING PHOTOCOPYING, RECORDING, OR BY ANY INFORMATION STORAGE AND RETRIEVAL SYSTEM, WITHOUT THE WRITTEN PERMISSION OF THE ENGINEER.

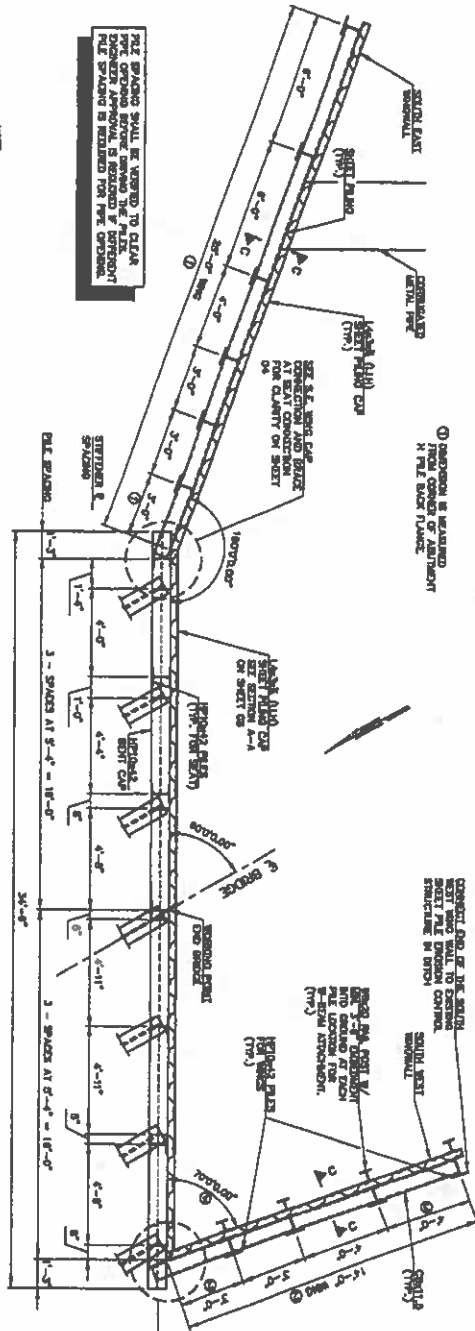
**SOUTH EAST WING
ELEVATION**

SOUTH ABUTMENT ELEVATION



NOTE
FOR HORIZONTAL BRACE CONNECTION DETAILS SEE SHEET 04
FOR SECTION A-A, B-B AND C-C SEE SHEET 04

SOUTH ABUTMENT PLAN



NOTE
RIP SHEADING SHALL BE WELDED TO CLEAN
PIPE CROSS BRACE BEHIND THE PLATE
PIPE SHEADING IS REQUIRED FOR PER CONNECTION

① CONNECTION IS WELDED
IN THE SHEET PLATE

CONNECTION END OF THE BRACE
SHALL BE WELDED TO THE
SOUTH WEST
STRUCTURE IN VIEW

REMOVE THE GUSSET
AND BRACE AT EACH
PILE LOCATION FOR
PILE INSTALLATION.

SEE S.E. WING CAP
CONNECTION AND
BRACE AT SEAT
QUANTITY ON SHEET 04

IF FOUND PILES FOR BRACE SHALL BE REMOVED
WHICH EVER CROSS FIRST.

IF FOUND PILES FOR ABUTMENT SEAT SHALL
BE REMOVED WITH SECTION SHOWN
OR THE 2008 CODE STRONG SPECIFICATIONS
REQUIREMENT BE IN CONFORMANCE WITH THE
SITS OF 10 BARS THAT REMAIN. NO
MORE THAN 1/2 INCH PER SET. DISCONTINUE
REMOVAL OF DRIVING IS CALLED DANCE TO
THE TAIL.

NOTE
ALWAYS USE SHEET PLATE MAY BE USED UPON
SHEETS FOR THE EXISTING. LOAD CAPACITY
SECTION SPECIFIED ON THIS SHEET.

DO NOT EXCEED 1/4" FROM TOP OR SEAT
UP TO GROUND LINE AT SHEET PLATE.

NOTE: FOUND PILES SHALL BE LIFTED FROM STEEL
CAPS AND SHALL BE REMOVED TO THE SURFACE AND
SHALL BE NOT-UP CALLED FOR ASHRA AND
AT A RATE OF 2.00 PER SQUARE FEET TOTAL
WITH STEEL CLIPS OVER. SHEET PLATE SHALL
BE 10 GAUGE. CLIPS MUST BE 30,000 PSI
AND A BRIDGE FIELD SPACING OF 30,000 PSI.

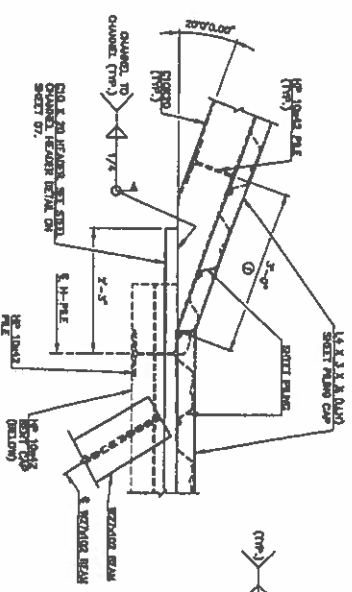
- ② CONNECTION IS WELDED
IN THE SHEET PLATE
- ③ ADJUST SHEADING TO ALLOW SPACE
TO CONNECT TO EXISTING BRACE
STRUCTURE. MAXIMUM SPACING
SHALL NOT EXCEED 8'-0"
- ④ ADJUST ANGLE TO ALLOW SPACE
BEHIND STRUCTURE.

DESIGN	DATE	BY	APPV
DESIGNED	1/14		
CHECKED	1/14		
APPROX.	1/14		
ISSUED	1/14		

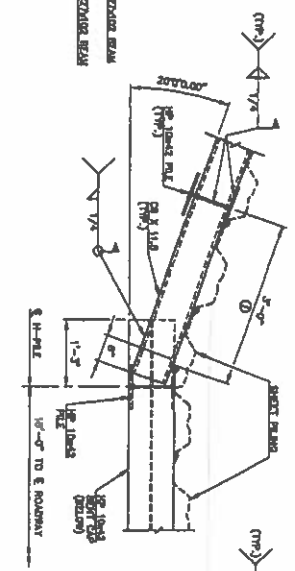
**BRIDGE A SOUTH ABUTMENT
PLAN**

AVENUE ROAD CANTON COUNTY

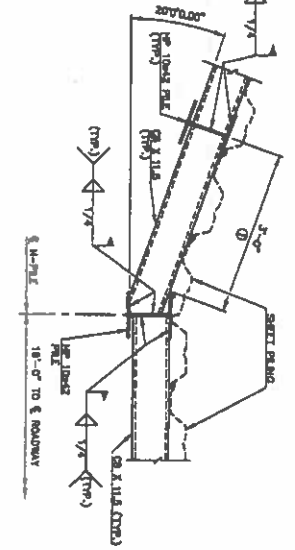
SHEET NO. 03



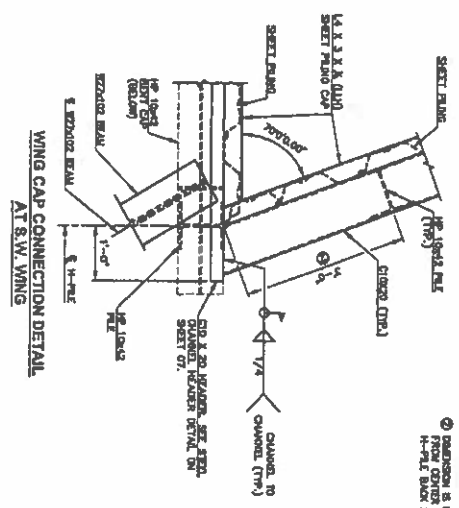
WING CAP CONNECTION DETAIL
AT S.E. WING



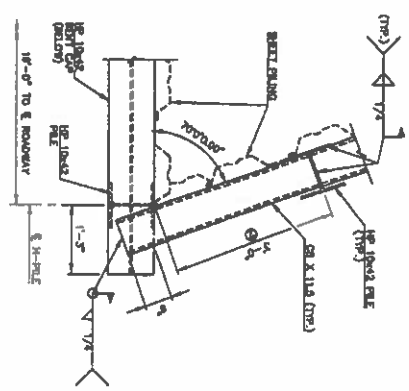
HORIZONTAL BRACE AT SEAT CONNECTION DETAIL
AT S.E. WING



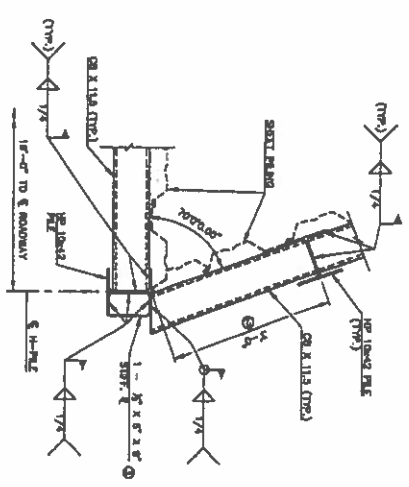
LOWER HORIZONTAL BRACE CONNECTION DETAIL
AT S.E. WING



WING CAP CONNECTION DETAIL
AT S.W. WING



HORIZONTAL BRACE AT SEAT CONNECTION DETAIL
AT S.W. WING



LOWER HORIZONTAL BRACE CONNECTION DETAIL
AT S.W. WING

- ① DIMENSION IS FORWARDS FROM CENTER OF ABUTMENT
- ② DIMENSION IS TO CENTER OF ABUTMENT
- ③ DIMENSION IS TO CENTER OF ABUTMENT

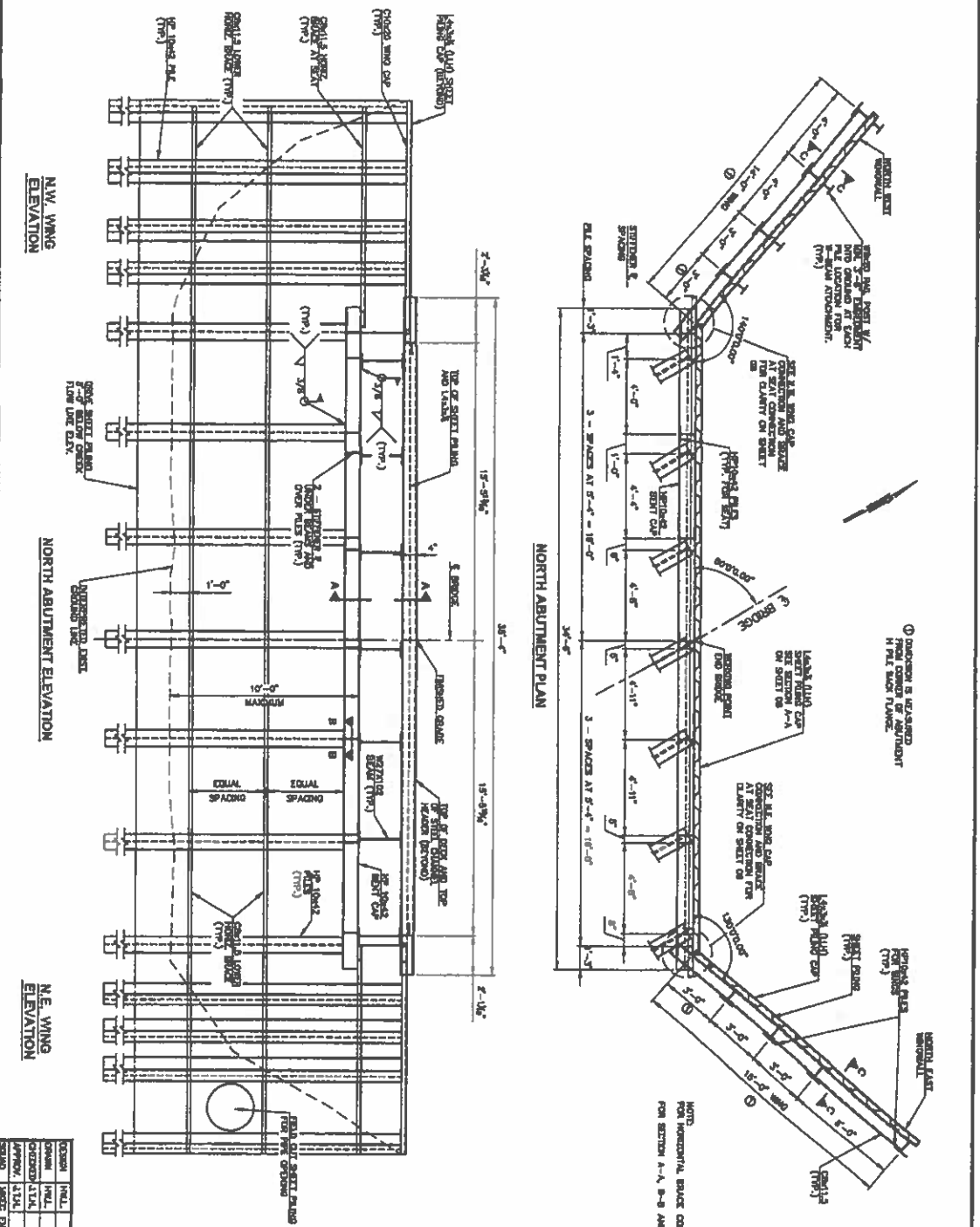
③ PLACE SYSTEM PLATE IN LINE WITH CS X 11.5 BR

DESIGNER	HYAL	APPURT ROAD	CANADIAN COUNTY
DRAWN	HYAL		
CHECKED	HYAL		
APPROVED	HYAL		
SCALE	AS SHOWN		

**BRIDGE A SOUTH ABUTMENT
DETAILS**

SHEET NO. 04

PROJECT NO.	
DATE	
SCALE	



DATE	BY	CHKD.	APP.	SCALE

BRIDGE A NORTH ABUTMENT PLAN
SHEET NO. 02.

1. CONNECTION IS CLARIFIED FROM CORNER OF ABUTMENT IN PILE BRIDGE FLANGE.

NOTE: FOR HORIZONTAL BRACE CONNECTION DETAILS SEE SHEET 04 FOR SECTION A-A, B-B AND C-C SEE SHEET 04.

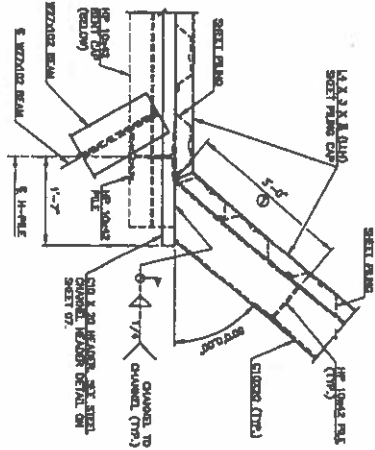
NOTE: FOR HORIZONTAL BRACE CONNECTION DETAILS SEE SHEET 04.

NOTE: ALL DIMENSIONS SHALL BE GIVEN UNLESS OTHERWISE SPECIFIED. ALL DIMENSIONS SHALL BE GIVEN TO FULL LENGTH OF MEMBER UNLESS OTHERWISE NOTED.

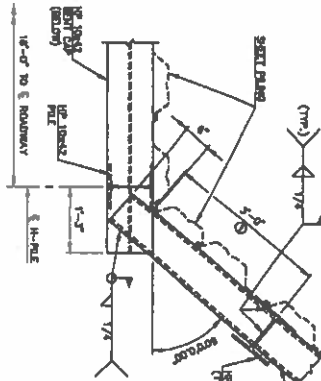
NOTE: ALL DIMENSIONS SHALL BE GIVEN UNLESS OTHERWISE SPECIFIED. ALL DIMENSIONS SHALL BE GIVEN TO FULL LENGTH OF MEMBER UNLESS OTHERWISE NOTED.

DESIGN	PREP.	CHKD.	APP.	SCALE

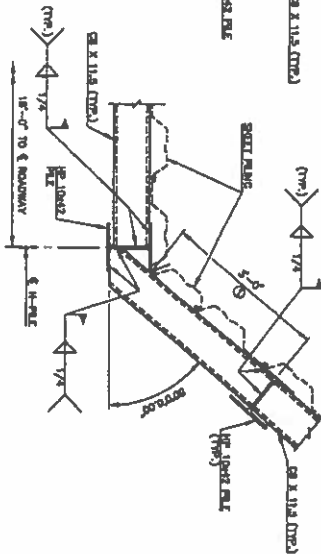
BRIDGE A NORTH ABUTMENT PLAN
SHEET NO. 02.



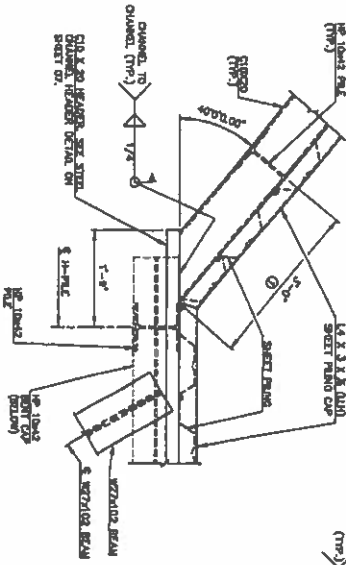
WING CAP CONNECTION DETAIL
AT N.E. WING



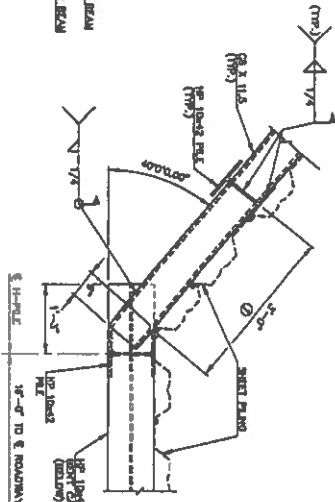
HORIZONTAL BRACE AT SEAT CONNECTION DETAIL
AT N.E. WING



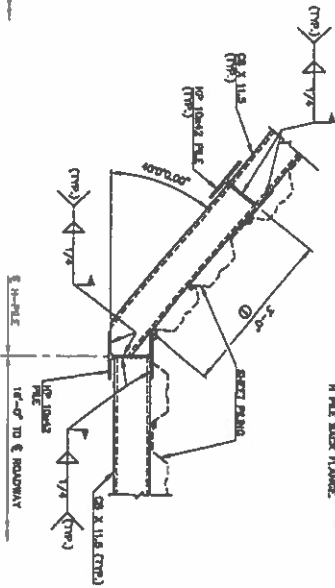
LOWER HORIZONTAL BRACE CONNECTION DETAIL
AT N.E. WING



WING CAP CONNECTION DETAIL
AT N.W. WING



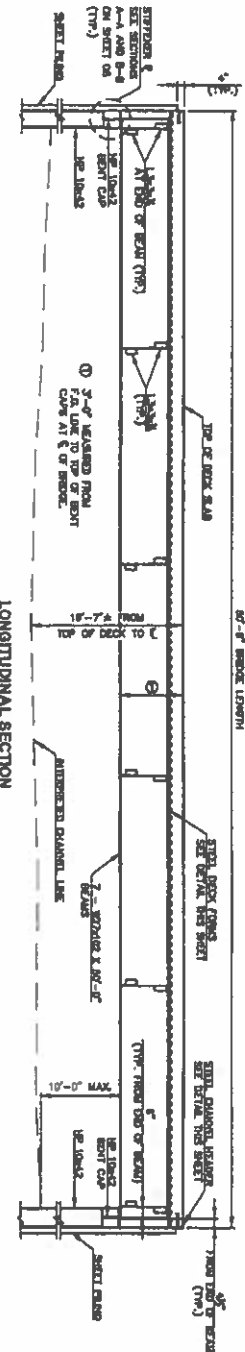
HORIZONTAL BRACE AT SEAT CONNECTION DETAIL
AT N.W. WING



LOWER HORIZONTAL BRACE CONNECTION DETAIL
AT N.W. WING

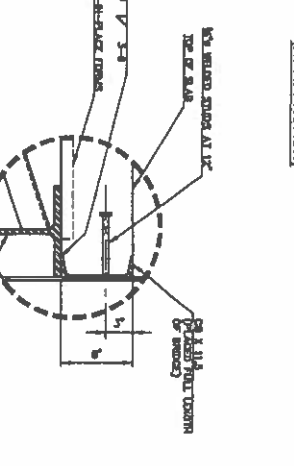
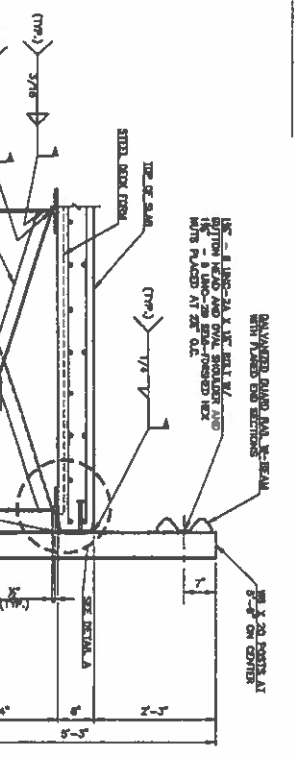
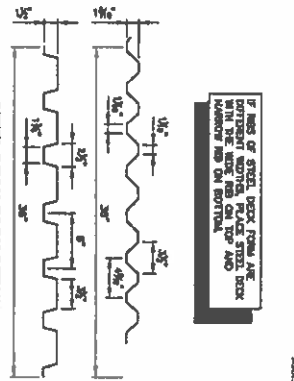
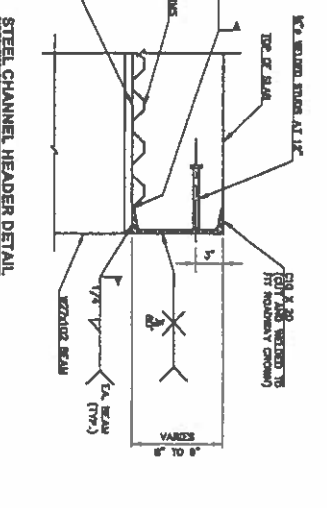
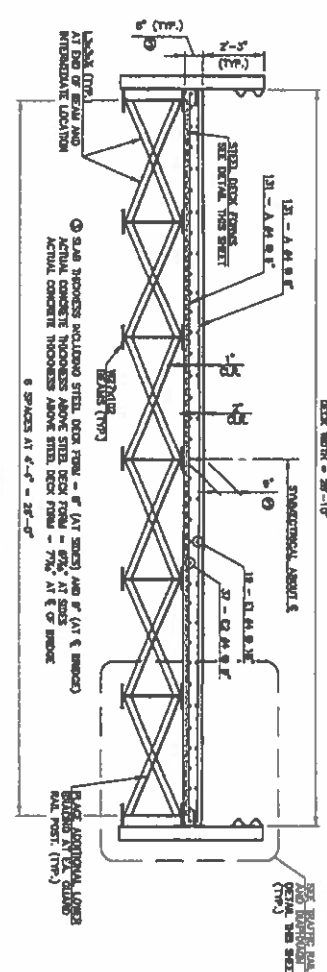
① Dimension is measured
from center of abutment
to face steel flange.

DESIGN	WEL	ROBERT ROAD	CANADIAN COUNTY
DRAWN	WEL	BRIDGE A NORTH ABUTMENT DETAILS	
CHECKED	ATK		
APPROV.	ATK		
REVISION	SHEET NO. 08		



DESIGN DATA

CLASS A CONCRETE	$f_c = 4.5 \text{ KSI}$
REINFORCED STEEL (GRADE 60)	$f_y = 60 \text{ KSI}$
ROLLED STEEL BEAMS (GRADE 50)	$f_y = 50 \text{ KSI}$
LR5 PANDEPTER RATING FACTOR	1.17
LR5 OPERATING RATING FACTOR	1.12
LR5 EMERGENCY LOAD RATING	2.00 TONS (4500)
LR5 OPERATIONAL LOAD RATING	40.4 TONS (9000)
	79.2 TONS (17500)



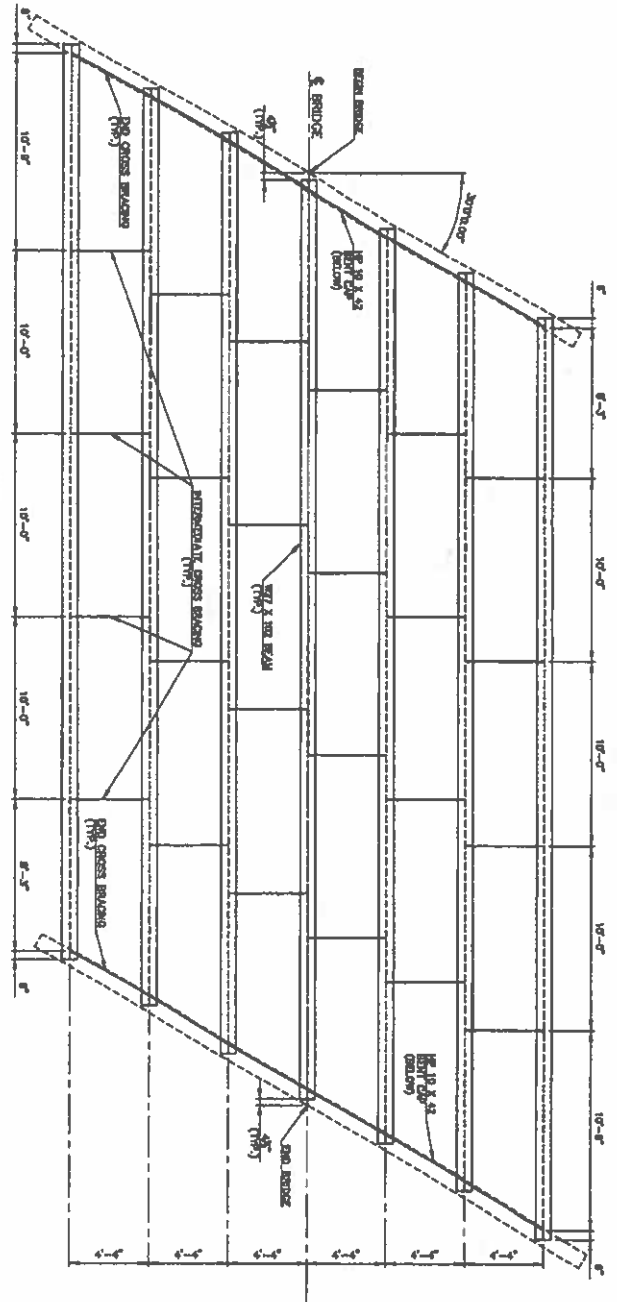
FORMS OF STEEL DECK FORM ARE TO BE CONSIDERED TO BE THE PROPERTY OF THE CONTRACTOR AND TO BE MAINTAINED IN THE BEST CONDITION THROUGHOUT THE CONSTRUCTION PERIOD. THE CONTRACTOR SHALL BE RESPONSIBLE FOR THE PROTECTION AND MAINTENANCE OF THE FORMS. THE CONTRACTOR SHALL BE RESPONSIBLE FOR THE REMOVAL AND DISPOSAL OF THE FORMS AT THE END OF THE PROJECT. THE CONTRACTOR SHALL BE RESPONSIBLE FOR THE REPAIR AND MAINTENANCE OF THE FORMS. THE CONTRACTOR SHALL BE RESPONSIBLE FOR THE PROTECTION AND MAINTENANCE OF THE FORMS. THE CONTRACTOR SHALL BE RESPONSIBLE FOR THE REMOVAL AND DISPOSAL OF THE FORMS AT THE END OF THE PROJECT. THE CONTRACTOR SHALL BE RESPONSIBLE FOR THE REPAIR AND MAINTENANCE OF THE FORMS.

UNFINISHED QUAD S&M TO BE REMOVED WITH FINISHED END SECTIONS. THE CONTRACTOR SHALL BE RESPONSIBLE FOR THE PROTECTION AND MAINTENANCE OF THE FORMS. THE CONTRACTOR SHALL BE RESPONSIBLE FOR THE REMOVAL AND DISPOSAL OF THE FORMS AT THE END OF THE PROJECT. THE CONTRACTOR SHALL BE RESPONSIBLE FOR THE REPAIR AND MAINTENANCE OF THE FORMS.

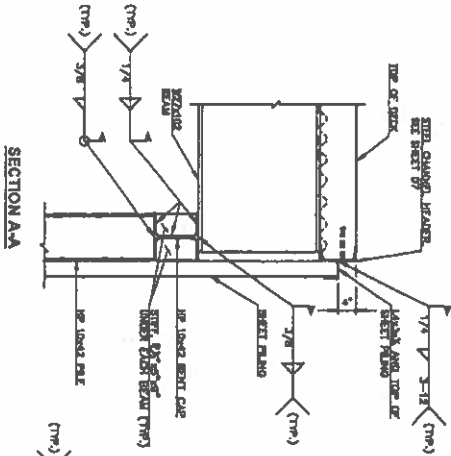
DESIGN	HALL	JOHNSTON ROAD	CANADIAN COUNTY
CHECKED	HALL		
APPROVED	LTK		
SCALE	AS SHOWN		

BRIDGE A SUPERSTRUCTURE DETAILS

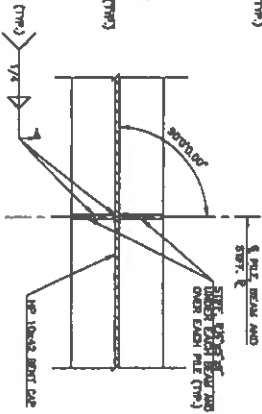
SHEET NO. 02



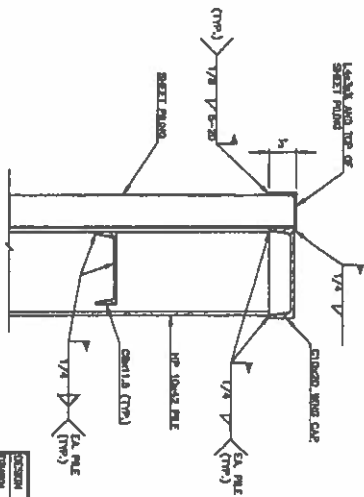
BEAM FRAMING PLAN



SECTION A-A



SECTION B-B

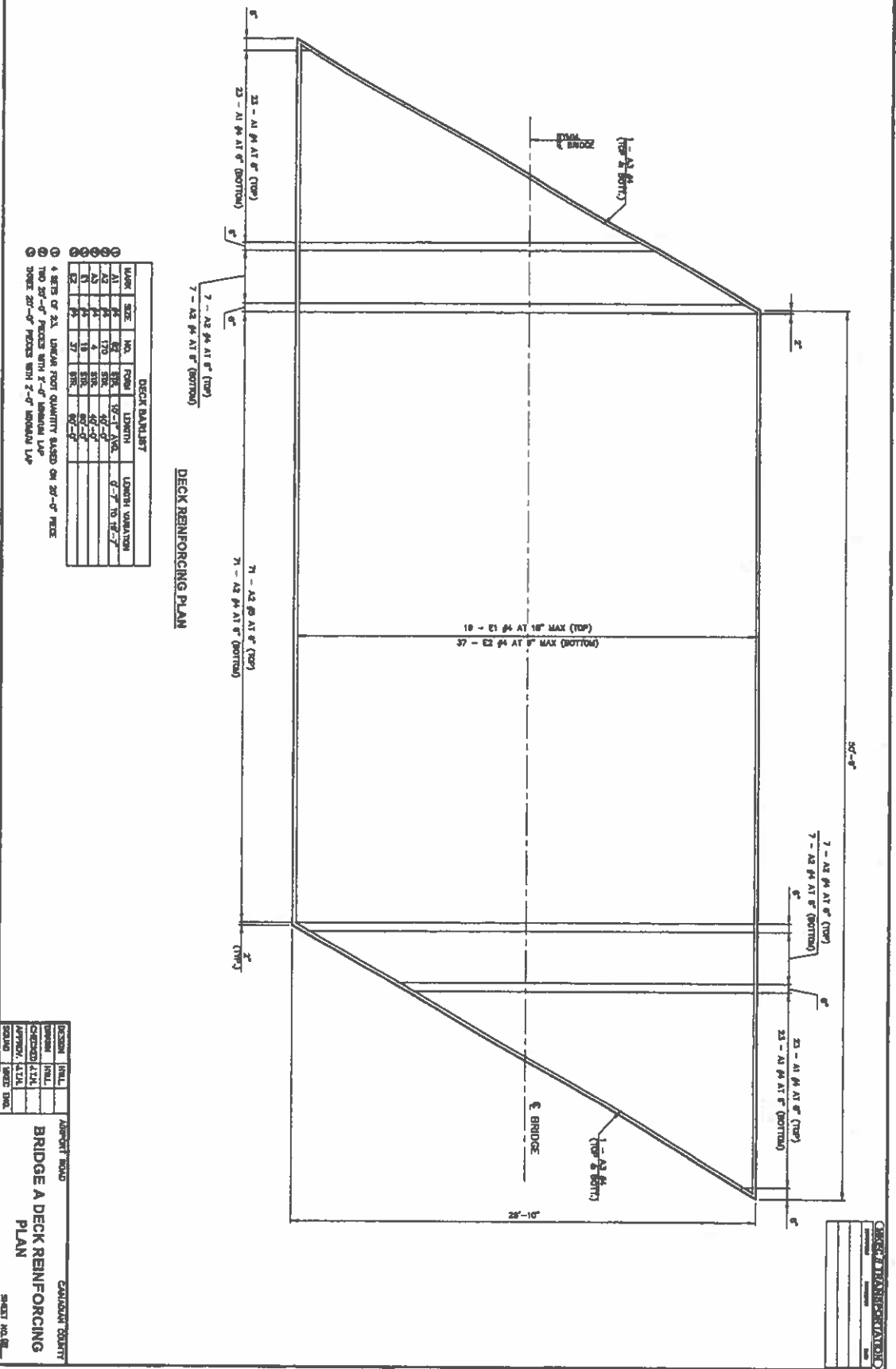


SECTION C-C

DESIGN	DATE	APPROVED	NO.
DRAWN	DATE		
CHECKED	DATE		
APPROVED	DATE		
SCALE	DATE		

BRIDGE A BEAM FRAMING PLAN

CANADIAN COUNTY
SHEET NO. 01

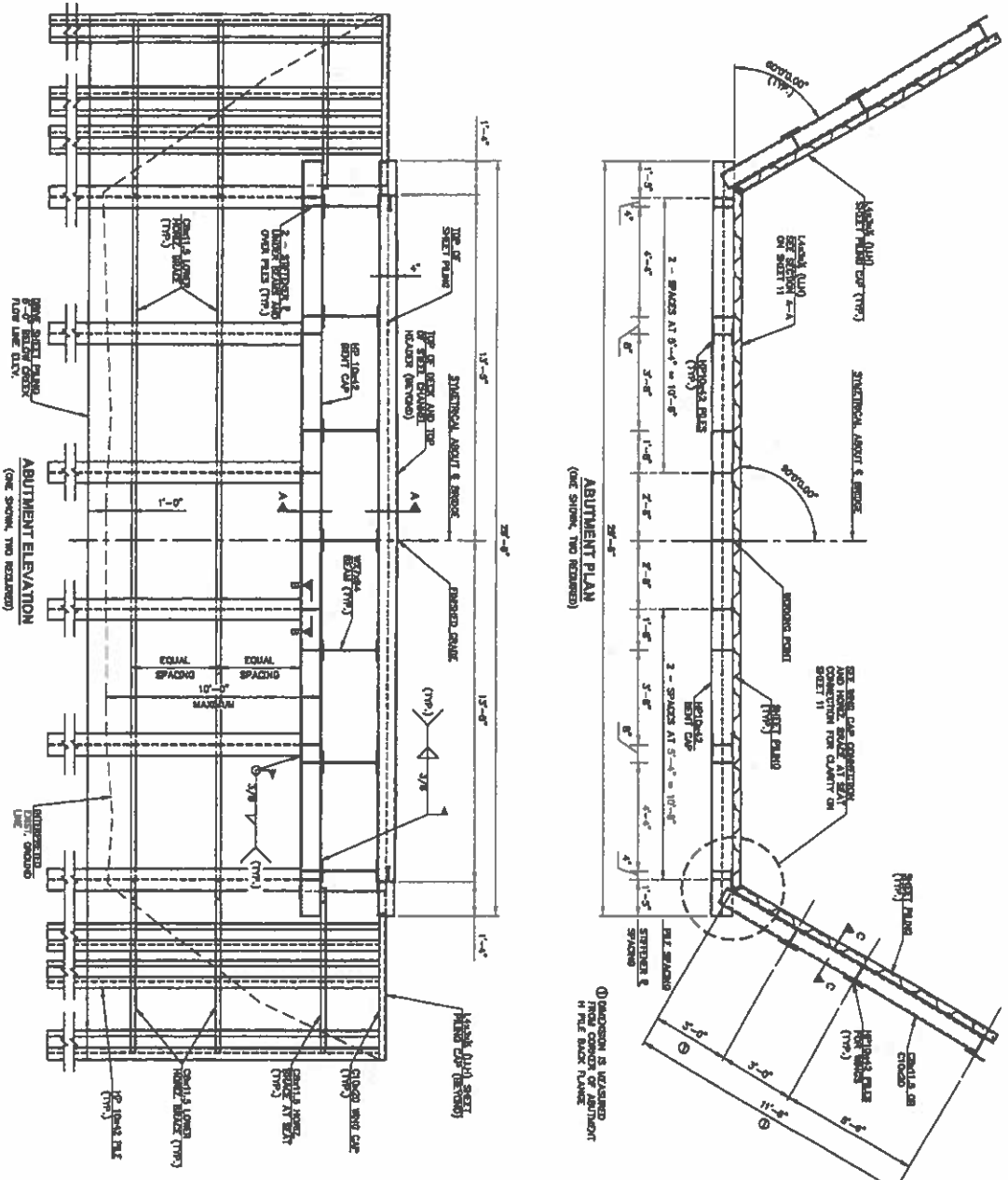


DECK REINFORCING PLAN

BAR	SIZE	NO.	FORM	LENGTH	LENGTH VARIATION
A1	#4	23	STR.	19'-7"	0'-7" TO 10'-7"
A2	#4	7	STR.	29'-0"	0'-0"
E1	#4	18	STR.	29'-0"	0'-0"
E2	#4	37	STR.	29'-0"	0'-0"

- ① 4 SETS OF 23. LENGTH FOOT QUANTITY BASED ON 29'-0" FEEL
- ② TWO SETS OF 7 FEEL WITH 2" OF MINIMUM LAP
- ③ THREE SETS OF 18 FEEL WITH 2" OF MINIMUM LAP

DESIGN	INCL.	APPROX. ROAD	CANADIAN COUNTY
CHECKED	INCL.	BRIDGE A DECK REINFORCING PLAN	
APPROV.	INCL.		
SCALE	INCL.		SHEET NO. 02



DESIGN	DATE	2007.11.08	CANTON COUNTY BRIDGE B ABUTMENT PLAN SHEET NO. 18
DRAWN	BY		
CHECKED	BY		
APPROVED	DATE		

NOTE:
 SHEET PILING SHALL BE MADE FROM STEEL CORROSION
 TO LAST 10% OF LAST 1/2\"/>

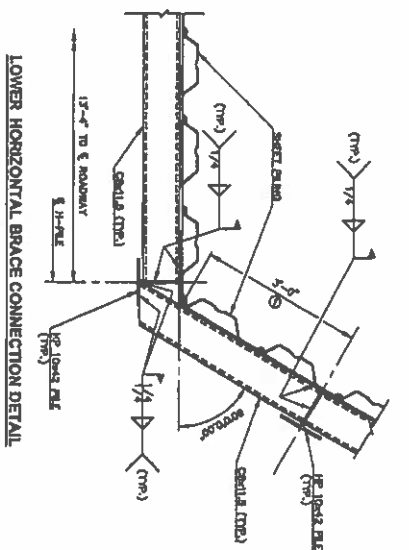
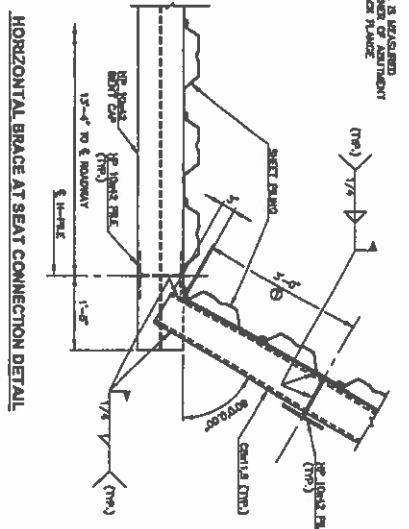
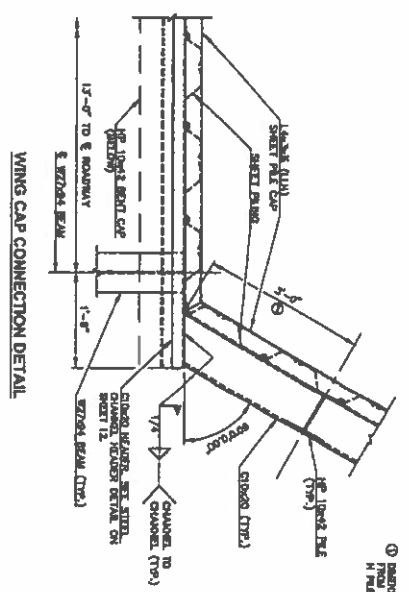
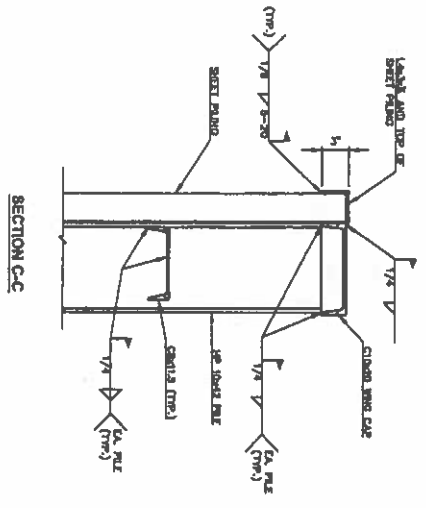
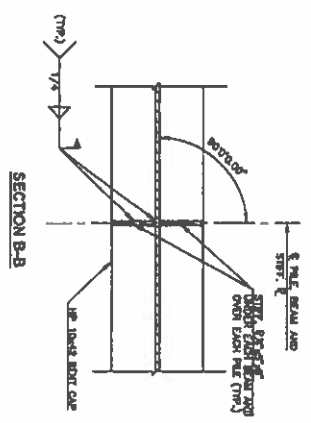
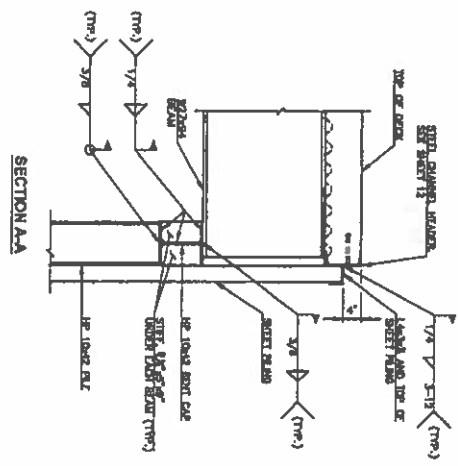
DO NOT DIMENSION 1/2\"/>

NOTE:
 ALTERNATE SHEET PILING MAY BE USED UPON
 APPROVAL OF THE ENGINEER. SHEET PILING SHALL BE
 SECTION SHOWN ON THIS SHEET.

NOTE:
 1/2\"/>

NOTE:
 1/2\"/>

NOTE:
 FOR SECTION A-A, B-B, C-C AND LONGHORIZONTAL
 BRIDGE CONDITION DETAILS SEE SHEET 11.

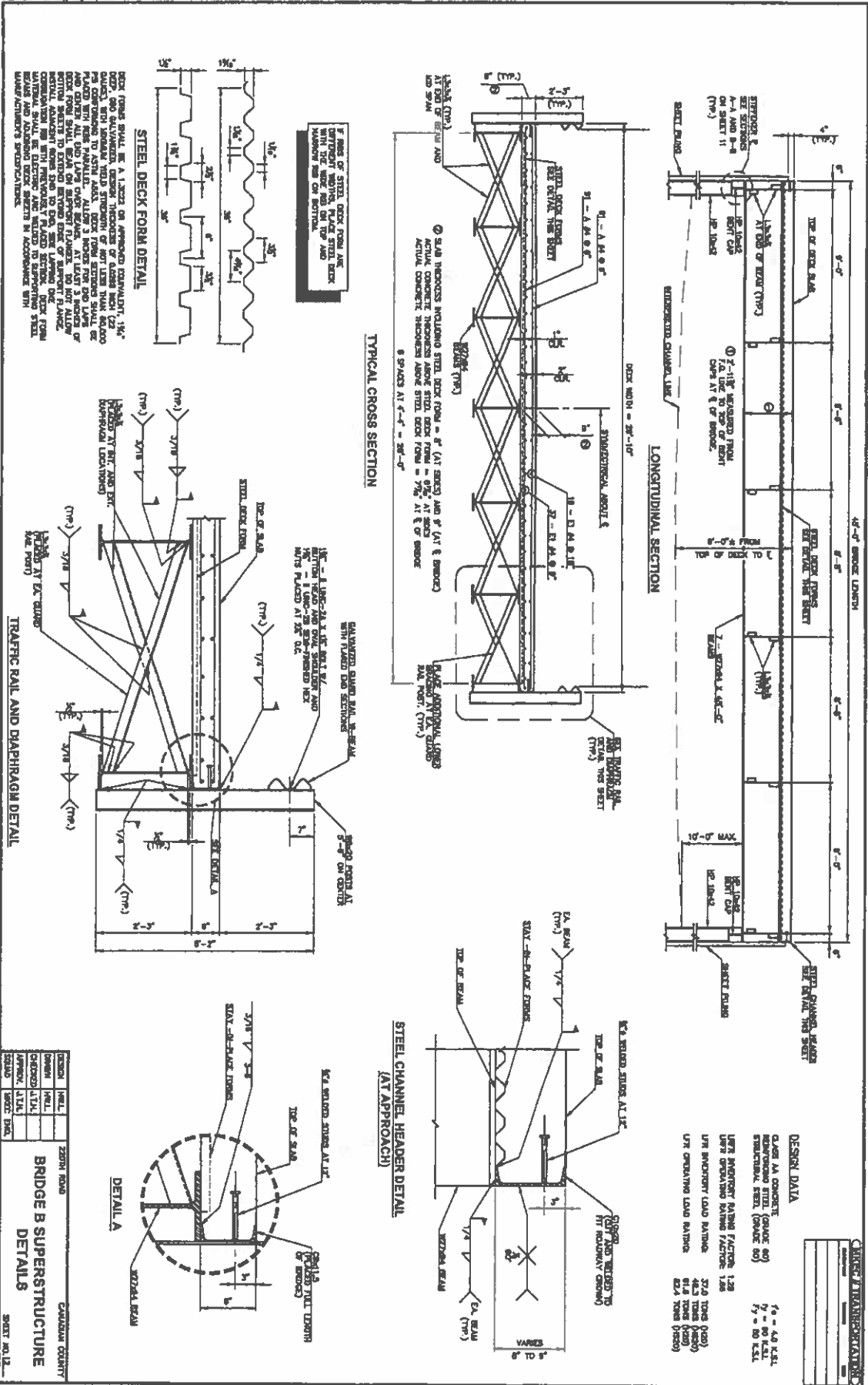


① DIMENSION IS MEASURED FROM CENTER OF ABUTMENT TO THE BRACE PLATE

CHECK FOR APPROVAL

DESIGN	DATE	ZORN ROAD	CANADIAN COUNTY
DRAWN	DATE		
CHECKED	DATE		
APPROV.	DATE		
SCALE	SHEET NO.		

BRIDGE B ABUTMENT DETAILS
SHEET NO. 11





Date Issued: August 09, 2021
Bid Number: 2022-#01
Closing Date: September 7, 2021 at 9:00am
PO Box 458, 201 N. Choctaw Ave., El Reno, OK 73036
Opening Date: September 7, 2021 during Commissioner's Meeting that begins at 9:00am
Commissioner's Meeting Room, 201 N. Choctaw Ave., El Reno, OK 73036

~ AFFIDAVIT ~
BRIDGE PLANS

for
Canadian County Airport & 220th Bridge Project / District #1

State of Oklahoma)
County of Canadian) §

I, Lena Marquez, Purchasing Agent, in and for said County and State, do hereby certify that "Bridge Plans" were sent to the following:

BidClerk
projects@bidclerk.com

Bid News
projects@isqft.com

River Ridge Construction
4637 Pleasant View Rd
Newkirk, OK 74647

Online Data Services
5425 Peachtree Parkway NW
Peachtree Corners, GA 30092

ePlan
1400 Forum Blvd. Ste 7B
Columbia, MO 65203

Reed Construction Data
30 Technology Pkwy South, Suite 100
Norcross, GA 30092

K&O Construction
PO Box 1845
Enid, OK 73702

Gable Construction Services
12345 SW 44th
Mustang, OK 73064

Dietz Welding & Bridge Const Inc
252021 E County Road 40
Cleo Springs, OK 73729

Railroad Yard
PO Box 2283
Stillwater, OK 74076

K & R Builders
8020 SW 74th Street
Oklahoma City, OK 73169


MTZ Construction Inc
Attn: Jose Martinez
3545 SW 37th Street
Oklahoma City, OK 73119

RRY Services LLC
PO Box 2283
Stillwater, OK 74076

CD Smith Construction Inc
1074 Cumberland Mansion
Yukon, OK 73099

Summit Civil Contractors, LLC
1704 S. Mississippi
Ada, OK 74820

Witness my hand and seal this 12th day of August, 2021.


Lena Marquez, Purchasing Agent

